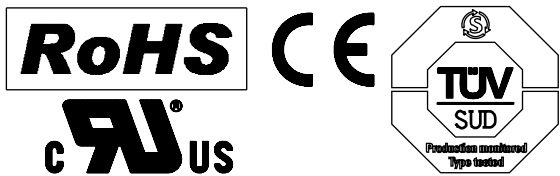
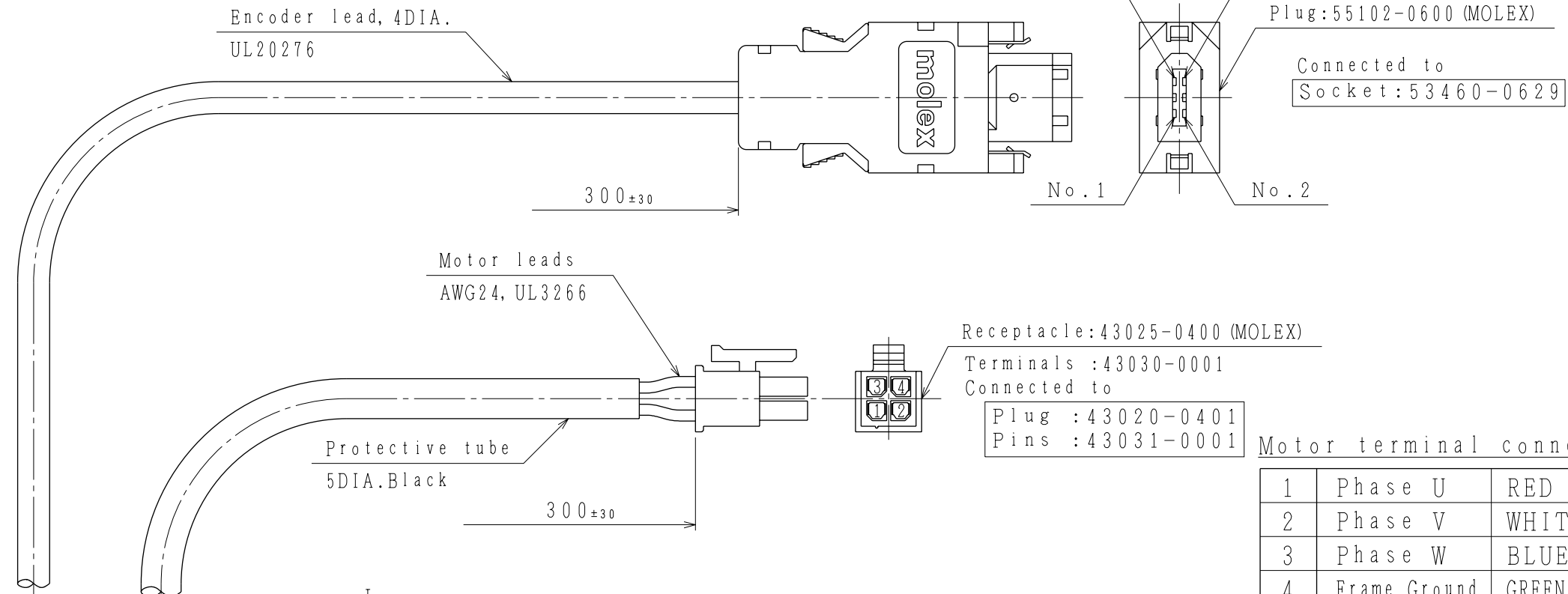


DWG.NO. 900-133-737

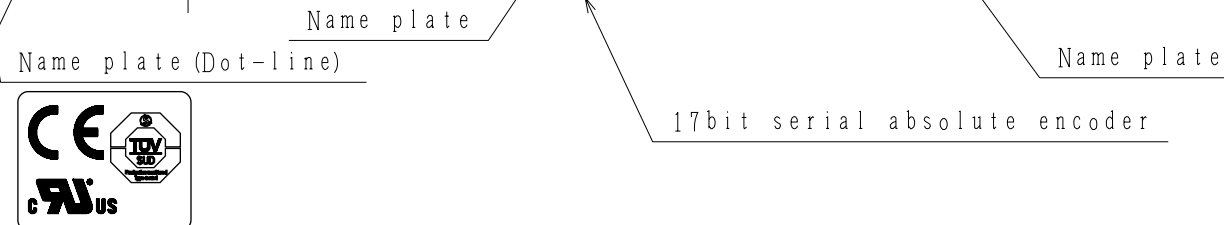
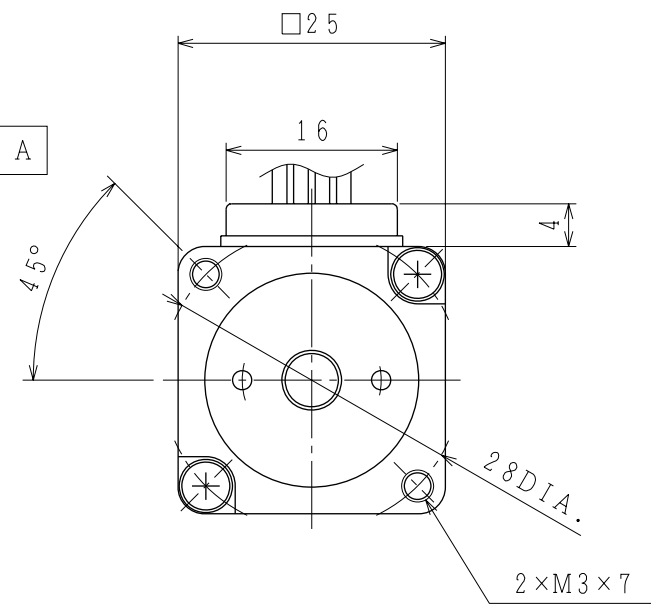
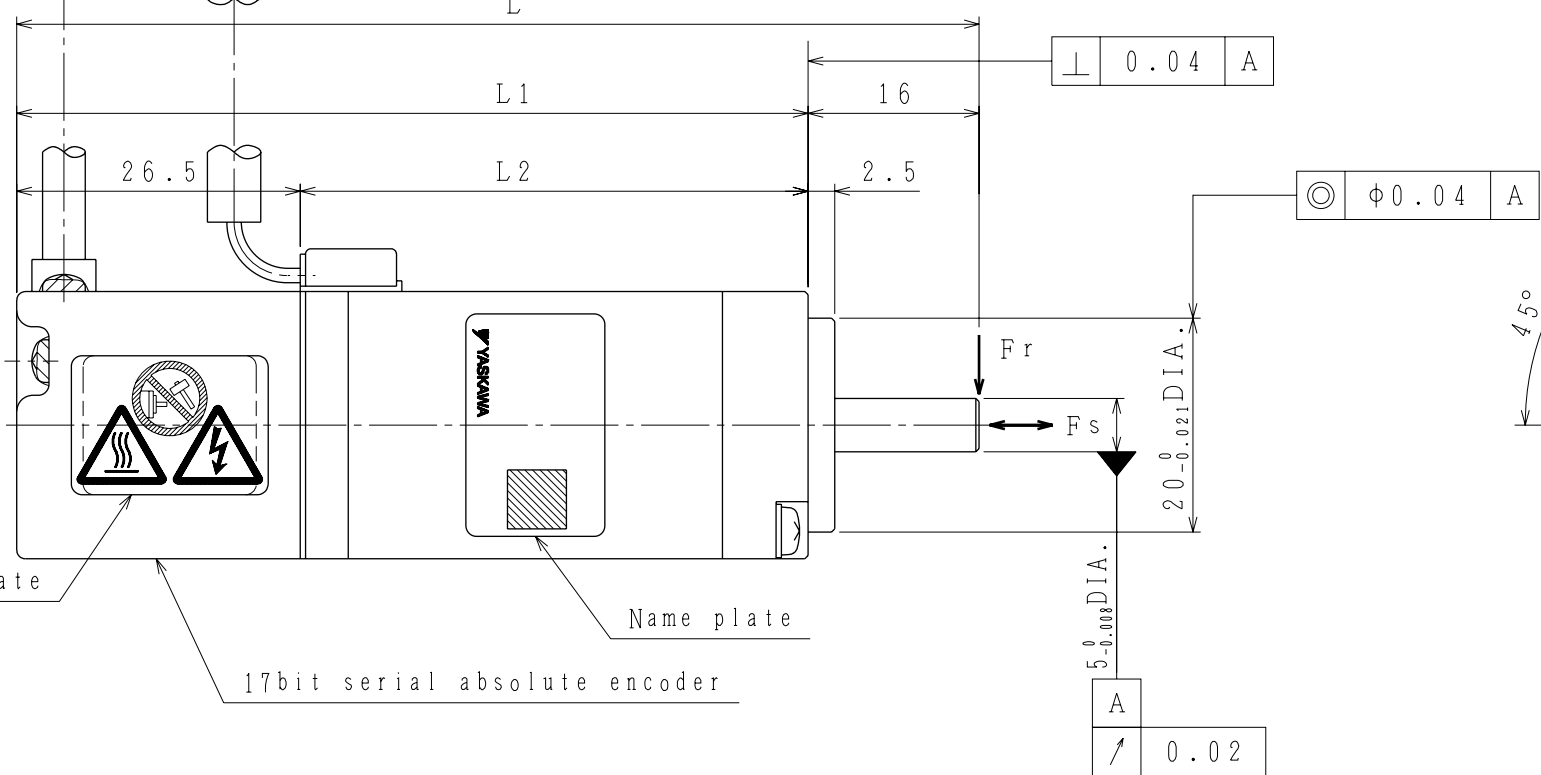
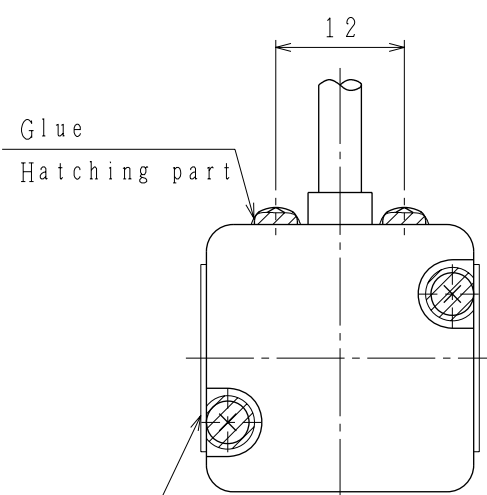


Encoder terminal connection

1	PG 5 V
2	PG 0 V
3	BAT
4	0 BAT
5	PS
6	* PS
Connector case	Frame Ground



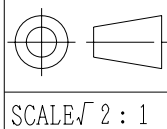
1	Phase U	RED
2	Phase V	WHITE
3	Phase W	BLUE
4	Frame Ground	GREEN/YELLOW



- Notes)
- Motor specifications :900-099-232
  - Encoder specifications:900-117-057
  - Motor weight includes leads.
  - Degrees of Protection:IP55 (Except for leads and drive end side.)
  - All dimensions are in millimeters.
  - General tolerances:JIS B 0419-cL

Item No.	Type	L (mm)	L1 (mm)	L2 (mm)	Weight (g)	Voltage (V <sub>DC</sub> )	Rated Output (W)	Rated Torque (mN·m)	Time Rating	Rated Rotation Speed (min <sup>-1</sup> )	Allowable Radial Load Fr(N)	Allowable Thrust Load Fs(N)
1	SGMMV-A1E2A21	70	54	27.5	130	24	10	31.8	CONT.	3000	34	14.5
2	SGMMV-A2E2A21	80	64	37.5	170	t <sub>o</sub>	20	63.7				
3	SGMMV-A3E2A21	90	74	47.5	210	48	30	95.5			44	

REFERENCE ONLY



TITLE AC SERVO MOTOR Σ-Vmini SERIES

SGMMV Type 10, 20, 30W

DWG.NO.

900-133-737

REV.



SIZE A3